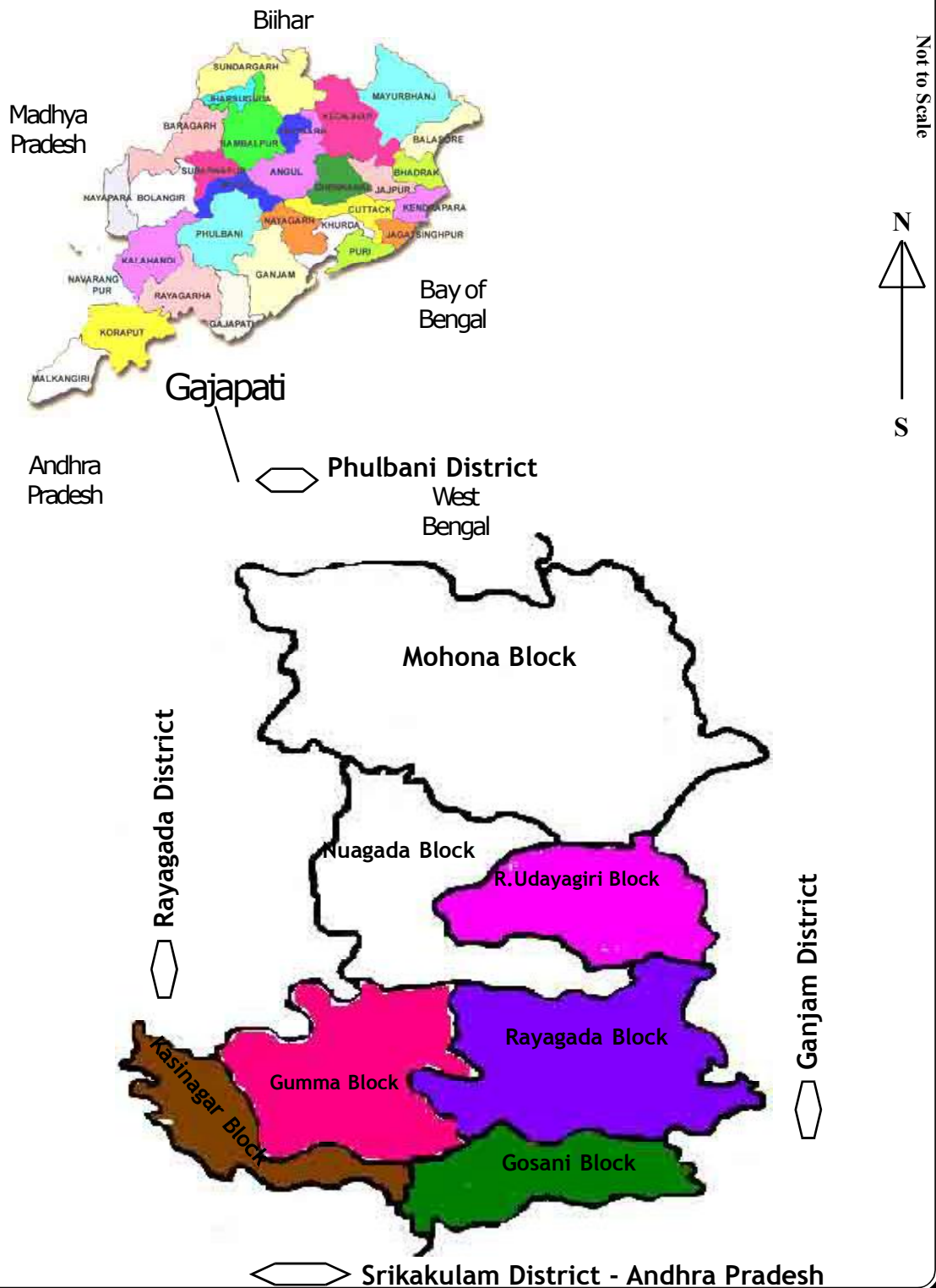


# **ANNUAL REPORT 2014-15**



**CENTRE FOR COMMUNITY DEVELOPMENT  
(CCD)**

## Map Showing the CCD operational Blocks of Gajapati District in Orissa



<b>Contents</b>	<b>Page No</b>
<b>Message from the Secretary</b>	
<b>About CCD</b>	
<b>Programmes and Projects</b>	
<b>Progress Made During the year 2014-15</b>	
☞ Promotion of Sustainable Livelihood Practices	
☞ Women Empowerment and Promotion of micro-enterprise	
☞ Child Rights	
☞ Community Based Rehabilitation of Person With Disabilities	
☞ Community Health	
☞ Capacity Building of elected members of PRI	
<b>Future Focus</b>	
<b>Governance in CCD</b>	
<b>Financial Details 2014-15 (Audit Report)</b>	

## Letter from Secretary .....

I am proud to be in this sector promoting values and ethics of volunteerism since 35 years. CCD is working in Gajapati District of Odisha for the socio-economic empowerment of Soura Tribes, SCs & other marginalized community since 1992.

CCD is glad to release the 23<sup>rd</sup> Annual Report with an objective of sharing the major interventions and achievements of 2014-2015 to the key stake holders of the development sector/partners/Govt & Non Govt institutions. These achievements are of the reflection of the involvement of the staff, board of directors, target community, well-wishers and other stake holders.

During the reporting period, our emphasis was on promotion of sustainable livelihood of tribes, women & Persons with Disabilities promotion and strengthening institutions of Women and Person with Disability, reduction of malaria and malnutrition, skill development of the youth and PWDs, promotion of women entrepreneurship, capacity building of Elected PRI members and inclusive education. We are happy in enabling the target community's Capacity Building and their active participation in the development process and accessing their entitlements in coordination with concern departments.

I am very much thankful to the Board of Directors of CCD, District Administration, Project Partners(Donors) ,Grass root level govt. functionaries ,PRI members, Community, Network alliance member Organisations, Community Leaders, Staff and Media for their immense support in reaching our goals and overall development of the target community.



**A. JAGANNADHA RAJU, M.A., SECRETARY**

## CCD AT A GLANCE

### **About Centre for Community Development (CCD)**

☞ CCD is a non-profit making voluntary development organization working in Gajapati District of Odisha started with the leadership of Mr A. Jagannadha Raju in 1992 with a dream of bringing qualitative changes in the lives of Soura tribe. Since the inception, CCD is emphasizing to empower and mobilize the disadvantaged people improving their livelihoods as well as in protecting and promoting their social security and dignified life especially focusing on ultrapoor vulnerable community.

#### **Mission**

To enable marginalized communities to live a dignified life by promoting sustainable livelihood, equitable natural resource management and people centred development while upholding the principles of inclusion, gender equity and good governance.

#### **Vision:**

"CCD aspires for an inclusive just society where people can grow with self dignity, harmony with nature and are free from exploitation, oppression and gender discrimination."

#### **Strategies**

- ☞ Community Capacity Building and enhancing their participation.
- ☞ Promoting sustainable livelihood practices  
Institution Building
- ☞ Coordination and Collaboration with different govt. and other resource agencies.
- ☞ Inclusion
- ☞ Documentation and dissemination of Information

#### **Core Values**

- ☞ Empathy with the poor in fostering social Justice and equity.
- ☞ Gender sensitive and gender equity
- ☞ People centered and sustainable Development
- ☞ Ecological Sensitivity
- ☞ Inclusion
- ☞ Transparency and accountability
- ☞ Decentralized Governance
- ☞ Recognizing of the potentiality of the Community and promoting CRPs without bias.

#### **Thrust Areas**

- ☞ Natural Resource Management & Sustainable Livelihood Promotion
- ☞ Community Health (Mother and Child Care, Malnutrition and Malaria)
- ☞ Women Empowerment and Promotion of Micro-Enterprises
- ☞ Child Rights & Child Development
- ☞ Mainstreaming of Person With Disability
- ☞ Good Governance

#### **Target Community**

"**Soura**" tribe is the primary target community along with Scheduled Caste and Other Backward Community. **Children, Persons With Disability and Women** are being well integrated in all its developmental Programmes.

## Objectives

- ☞ To promote sectorial professionalism in community health, sustainable livelihood, women empowerment, child development and mainstreaming of PWDs by 2020.
- ☞ To promote self-reliant institutions of women and farmers/producers and Person with Disability at different level.
- ☞ To ensure food and nutritional security among 60% of target community by 2020.
- ☞ To increase the household income upto 10,000/- per month of 60 % HHs by 2020 through sustainable livelihood practices.
- ☞ To promote cultivation of cereals, pulses, millets, tuber crops, greens and other nutritious crops through sustainable agronomy practices/organic farming.
- ☞ To promote sustainable harvesting practices of NTFP, collective procurement, value addition and product development.
- ☞ To reduce IMR and MMR through improving maternal and child health practices.
- ☞ To reduce malaria prevalence in the target area with the more focus on children and women.
- ☞ To enhance the nutritional status of malnourished children, adolescent girls, pregnant and lactating mothers through education, referral services, linking with govt. services and promotion of nutritious food intake.
- ☞ To reach 10,000 PWDs of all category promoting social and financial inclusion by 2020.
- ☞ To enable the PWDs in accessing their rights and entitlements and lead a dignified life.
- ☞ To promote and strengthen Disabled People Organization (DPO) from Village to State level.
- ☞ To promote inclusive education focusing on children with visual and hearing impaired.
- ☞ To impart vocational training to PWDs and youth on various trade and facilitate credit/ other linkages for self- entrepreneurship.
- ☞ To empower the marginalized women enhancing their participation and leadership development in decision making process through SHGs, Federation and Cooperatives.

## Operational Area

### Odisha Gajapati District

Block	GPs	Total Villages	Total HHs	Total Population	Total PWDs
Gumma	21	93	1860	18199	203
Kasinagar	12	36	472	1877	171
Gosani	15	40	277	1171	213
Rayagada	16	97	5293	19413	1449
Paralakhemundi			959	2877	71
<b>Total – 4 blocks</b>	<b>54</b>	<b>234</b>	<b>8861</b>	<b>45537</b>	<b>2017</b>

**Funding Partners of the year**

1. ITDA, Gajapati
2. OSFDC Ltd, BBSR
3. SDTT, Mumbai
4. MISEREOR
5. REHASWISS
6. SIGHT SAVERS
7. SIRD, Bhubaneswar
8. NABARD
9. DEG/IFC
10. CTxGREEN

**CCD is registered under**

- Society Registration Act 1860 in Feb 1992
- FCRA in May 1994
- IT and 80-G
- PWD Act - 1995

**Receiptant of awarded**

- Prakruti Mitra - State Award
- Indira Priyadarshani Vrikshamitra - National Award
- Best Self-Help Promoting agency
- State Award to SAMARTH (Disable Peoples Organization) Promoted by CCD

**Accreditation and Membership:**

- Amnesty International
- International Association of Voluntary Efforts (IAVE), USA
- ASIAN HEALTH INSTITUTE – JAPAN
- Credibility Alliance
- VANI –New Delhi, India
- Orissa Voluntary Health Association (OVHA), Bhubaneswar
- CLAP – Cuttack – A Legal Network, Orissa
- District Employment Committee
- District Vigilance Committee
- District Council for Child welfare of Gajapati.
- District Grievance cell, Collectorate, Gajapati
- Dowry Prohibition Council in the district
- District Environment Society
- District Blind Control Society
- District Level steering cum monitoring committee MDM& District level coordination committee of ICDS
- District Level SSA Committee
- District level Inspection committee of CWC.
- White Ribbon Alliance

## Sector Wise Progress and Achievements – 2014-15

### Natural Resource Management & Sustainable Livelihood Promotion

#### Major Livelihood Projects

<b><u>Projects</u></b>	<b><u>Block</u></b>	<b><u>No of Villages</u></b>
OTELP Phase - 1 Extension	Gumma	34
OTELP Plus	Gumma	27
MISEREOR	Rayagada	65
OSFDC	Kasinagar	03
IFC / DEC / JKPM	Rayagada	

CCD has implemented numerous income generation activities to enhance the household income and to enhance the food security. Both NRM based and Non-farm based livelihood activities were implemented

#### OTELP Phase -1 Extension & OTELP Plus

The phase - I extension of OTELP was started in April 2013 with the goal to consolidating the gains, development comprehensive NRM and drinking water & sanitation plan for implementation under MGNREGS, support from mainstream government programs - line departments through convergence and schemes to continue the development process through existing community based organizations.

OTELP Plus Programme was started on June 2012 with a goal to "enable the poor tribal households to ensure their sustainable livelihood and food security through promoting more efficient, equitable, self-managed, optimum use of the natural resources, off-farm/ non-farm enterprise development and accessing the rights and entitlements.

#### **OTELP Phase -1 Extension**

Target Community	: Soura Tribe
Revenue Villages	: 34
No of VDAs	: 34
Hamlet Villages	: 13
Treatable Area in Ha:	5310.96
HHs	: 2105
Total Population	: 9559
PWDs	: 108 (67+41)
Vulnerable HHs	: 329

#### **OTELP Plus**

Target Community	: Soura Tribe
Revenue Villages	: 27
Hamlet Villages	: 07
Treatable Area in Ha	: 5396.598
HHs	: 1497
Total Population	: 7134
PWDs	: 03
Vulnerable HHs	: 372
No of VDAs	: 27



### **Major Intervention (OTELP P-1 Extension)**

- ☞ Support to Ultra poor vulnerable
- ☞ Specially Support to Physically Challenged
- ☞ Focused Livelihood intervention
- ☞ Habitation Improvement & Sanitation
- ☞ Piped Water supply through gravity flow
- ☞ Creation and development of Irrigation structure

### **Major Intervention OTELP Plus**

- ☞ Entry Point Activities
- ☞ Capacity building to community and CBOs
- ☞ Support to Ultra poor vulnerable
- ☞ Specially Support to Physically Challenged
- ☞ Focused Livelihood intervention
- ☞ Habitation Improvement & Sanitation
- ☞ Piped Water supply through gravity flow
- ☞ Creation and development of Irrigation structure

***SUPPORTED BY : IFAD / ITDA / OTELP***

### **Major Achievement (OTELP P-1 Extension & OTELP Plus)**

#### **☞ Support to Ultra poor vulnerable (Rs. 50000/- each beneficiaries)**

Sl. No	Name of project	No of Ben.	Programme
1	Grocery shop	01	OTELP P-1 Ext.
2	Tailoring shop	01	OTELP P-1 Ext.
3.	Mobile shop	01	OTELP P-1 Ext.
4.	Grocery shop	04	OTELP Plus



Prtima Bhuyan of Tumkur is running her grocery unit



Jaspal Karjee of Dantada is running his mobile retails shop at Gumma

**☛ Support to Ultra poor vulneable (Rs. 45000/- each)**

**Name of the project : (Low Cost House)**

· 26 nos of tribal ultra poor vulnerable families were supported worth of Rs. 40000/- each (8 nos) at Bontilida and Rs. 45000/- each (18 nos) for Low Cost House at Jangjanglo, Sindising, Luara, Lung, Sindiba, Rungrungba, Rgaijhol, S.Kolakote, Tarmangada, Tumkur and Dantada respectively by IFAD / OTELP / ITDA. They are proud to live in congeniel environment with secure in their house and also enjoying good living environment.

Sl. No	No. of Village	No of Ben.	Total Budget	Programme
1.	13	26	1125000.00	OTELP P-1 Ext.



**BEFORE - (PHAGUNA BHUYAN, BONTILIDA) - AFTER**



**BEFORE - (RAJANI SABAR, RUNGRUNGBA) - AFTER**

### ☛ **Focused Livelihood intervention**

<b>Sl. No</b>	<b>Name of project</b>	<b>No. of Villages</b>	<b>No of Ben.</b>	<b>Total Amt.</b>	<b>Programme</b>
1.	Poultry rearing	06	10	600000.00	OTELP P-1 Ext.
2.	Goat rearing	12	75	2250000.00	OTELP P-1 Ext.
3.	Vegetable (Drip-Trailles)	02	56	2770000.00	OTELP P-1 Ext.
4.	Carpenter	02	02	90000.00	OTELP P-1 Ext.
5.	Mobile retail shop	01	01	45000.00	OTELP P-1 Ext.
6.	Bike Garagge	01	01	45000.00	OTELP P-1 Ext.
7.	Grocery Shop	01	01	45000.00	OTELP P-1 Ext.
8.	Cycle repair Shop	01	01	45000.00	OTELP P-1 Ext.
9.	Poultry rearing	03	08	240000.00	OTELP Plus
2.	Goat rearing	21	50	350000.00	OTELP Plus
3.	(Poly House+drip)	01	25	1250000.00	OTELP Plus
4.	Salon	01	01	45000.00	OTELP Plus
5.	Motor Garrage	03	03	135000.00	OTELP Plus
6.	Tailoring	03	03	135000.00	OTELP Plus
7.	Carpentry	02	02	90000.00	OTELP Plus
8.	Starionary Shop	02	02	900000.00	OTELP Plus
9.	Xerox shop	01	01	45000.00	OTELP Plus
10.	Photo Studio	01	01	45000.00	OTELP Plus
11.	Electrical repairng shop	01	01	45000.00	OTELP Plus
12.	Drip irrig.with poly House	01	25	1250000.00	OTELP Plus



Mojaniya Raita is running his mobile repair shop at Gumma



Collector, Gajapati visiting economic unit



Goat shed at Sindising



Cycle reparing shop at Tohojung by Apolo Raito



Carpentry uniut at Ragaising at Jacob Bhuyan



Grocery shop by Nlba Raito at Tohoung

## Case Study

### **Opportunity knocks the door only once in the life – take the opportunity without any delay !!!**

Sanju Gomango, aged 41 years, resident of Badakalakote is a bike mechanic and he was working in a bike garage at Paralakhemundi. He was getting Rs. 100 per day. Daily to and fro from Badakalakote to Paralakhemundi, he was affording 50% of his income for travel, lunch and breakfast.



The opportunity has come for Sanju to get. Rs. 45000/- from OTELP / IFAD Top up assistance to establish a bike garage. With the support of VDC and CPC members, he has set up his garage and invested some own contribution for procuring spare parts, bike tyre, engine oil etc. Earlier days, he was forced to go to Paralakhemundi for one spare part as and when needed. But now in addition to bike repair, he is also selling the spare parts and other needy items. Now the people from 5 – 7 villages are depending on this guarage.

Now Sanju Gomango is getting daily income of Rs. 1500/- to Rs. 1700/- and getting net profit of Rs. 300/- to Rs. 400/- per day. Sanju is now happy with his garage and very proud for the support of IFAD / OTELP / ITDA and facilitation of CCD.

### **Habitation Improvement & Sanitation**

<b><u>Sl. No</u></b>	<b><u>Name of project</u></b>	<b><u>No. of Villages</u></b>	<b><u>No of Ben.</u></b>	<b><u>Total Amt.</u></b>	<b><u>Programme</u></b>
1.	Ind. Household Latrine	06	96	1440000.00	OTELP P-1 Ext.
2.	Ind. Household Latrine	02	36	540000.00	OTELP Plus
2.	Village waste disposal	05	452	1960000.00	OTELP P-1 Ext.
3.	Village waste disposal	04	173	1232000.00	OTELP Plus



Ayuba Karjee of Dantada, Gumma GP with their own toilet



Village waste disposal system at Lung Village



Village waste disposal system at Sindiba Village

☞ **Initiative through DIF surplus**

☞ Piped Water supply through gravity flow - OTELP P-1 Extension

SL. No	Name of Village	Name of VDC	GP	Sanctioned Amount (Rs.)
1.	Bontilida	B.K.M	Ajayagada	894800.00
2.	Kantisahi	B.K.M	Ajayagada	705000.00
3.	Bongodising	Sion	B.Kalakote	709000.00
4.	U.Abasing	Emmanual	Munising	841500.00
<b>Total Amount</b>				<b>3150300.00</b>

☞ Drying Yard - OTELP Plus

SL. No	Name of Village	Name of VDC	GP	Sanctioned
1	Tuburuda	Tudumar	Bhubani	49000.00
2	Tarbaul	Tara	Bhubani	49000.00
3	Ameising	Masiki	Bhubani	49000.00
4.	Papada	Onaltal	Bhubani	49000.00
5.	Bhubani	Manarong	Bhubani	49000.00
6.	Podomsing	Podomsing	Baijhal	49000.00



Drying yard at Podomsing



Drying yard at Papada

☞ Village Drain - OTELP Plus

SL. No	Name of Village	Name of VDC	GP	Sanctioned
1.	Almolda	Almolda	Baijhal	55000.00
2.	Jarbudi	St.Thomas	Brusava	55000.00



## Case Study

Drinking water (Piped water supply through Gravity fed) is successful to get drinking water for all households of the above village. Total 233 households benefitted i.e., Bontilida (96 HH), Kantisahi (32 HH), U.Abasing (66 HH with School) and Bongodising (19 HH with School). Apart from this, all households have linked the water into their toilets and also using. The women members are rescued from drudgery in getting head load water daily from 1 - 3 Km distance for drinking and other domestic use. The water tanks constructed with natural filter which is also saving their people especially women and children from contaminated water and waterborne diseases upto 70 to 80 %. The people especially women are very happy to get drinking water at their door step and also saving their time. Now they are utilizing the time for agriculture, for their children, home and family. The villagers are proud to IFAD / OTELP / ITDA for the support and guidance for the project. The VDC members and CCD staff have facilitated for completion of the project for the benefit of the community.

### ☛ Creation and development of Irrigation structure

<u>Sl. No</u>	<u>Name of project</u>	<u>No. of Villages</u>	<u>No of Ben.</u>	<u>Total Amt.</u>	<u>Ben, Cont</u>	<u>Programme</u>
1.	Water Lifting Devices	26	60	90000.00	129960.00	OTELP P-1 Ext.
2.	Water Lifting Devices		80	120000.00	173280.00	OTELP Plus
2.	DBI	01	27	506000.00	60000.00	OTELP Plus



Drinking water at Kantisahi (Bontilida) - B.K.M VDC



Drinking water at U.Abasing in presence of P.A., ITDA, Paralakhemundi



DBI at Sindring village



Pumpst utilising by farmers



Pump distribution to the beneficiaries

### **Case Study**

The farmers are using the pump set in their land for agriculture and vegetable cultivation by lifting water from nearest water bodies. The production was increased. The farmers are also used their pump on hiring basis for paddy winner and got approx. Rs. 5000/- to Rs. 6000/- in one season. They are happy to share for getting additional income.



Farmers are using Diesel pump for paddy cultivation

### **Vegetable cultivation with support of RKVY (Convergence)**

Seeds have been supplied to 986 farmers in 34 operational villages in OTELP phase - 1 areas with the support of RKVY worth of Rs. 937470.00 and 2 nos of training have been organized at T.Abasing villages inviting horticulture, agriculture deptt and OTELP personnel with the expenditure of Rs. 27000/- totalling of Rs. 964470/- utilized through convergence including seed, fertilizer and training cost.

#### **The following seeds have been supplied**

<u>Seed</u>	<u>No. of Village</u>	<u>No. of farmers</u>	<u>Qty in Kgs</u>	<u>Total Amount</u>
Turmeric	17	125	4,375	183,750
EFY	17	16	800	30,720
Brinjal	17	80	32	48,000
Cassava	3	100	2,500	71,500
Onion	3	100	40	58,000
Radish	6	70	28	35,000
Tomato	5	80	16	48,000
Improved Ragi	10	100	200	45,000
POP Paddy	3	10	120	23,700
POP Ragi	3	10	20	21,700
Rake Weeder	10	120	13	15,600
M.Potato	7	150	9,000	345,000
Chille	3	25	0.38	11,500
Total Farmers		986		937,470.00

### **RKVY Trainings**

3 days training programmes to 180 farmers on RKVY on best practices and improved methods of cultivation to get good yield. The farmers from 13 VDCs have been participated including women farmers.



## **RKVY AT A GLANCE**



Mr. Pradipta Mohanty along with ITDA officials visiting Sindiba for Turmeric cultivation



Mr. Pradipta Mohanty along with ITDA officials visiting Sindiba for Radish cultivation



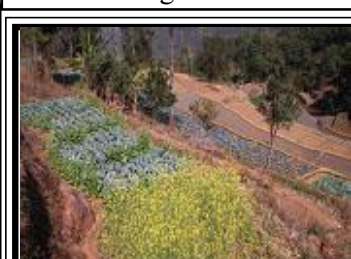
Vegetable cultivation practices by Farmers at Sindiba through RKVY



Onion Cultivation at Maneba (Sindiba) by Community through RKVY



Brinjal cultivation by Jikoniyo Gomango at Tohojung through RKVY



Improved vegetable cultivation practices at Bureising and Sindiba village through RKVY

## **Case Study**

### **Vegetable cultivation is making them self reliant and hope for sustainable livelihood**

Jikoniya Gomango, S/o of Gunju Gomango of Tohojung and VDC secretary is the ray of hope for other villagers towards promoting vegetable cultivation for sustainable livelihood.

With the support of OTELP / IFAD / ITDA, CCD has promoted drip irrigation with trailies method in Tohojung for 26 farmers.



Jikoniya is one of the farmer has cultivated Snake gourd in trallies with intercropping of Green chille, Tomato and ladiesfinger. He sold snake gourd 255 KG and got Rs. 4250/-. In the beginning he sold Rs. 30/- per Kg and in last week of Oct-15, he sold in Rs. 15/- per Kg. He expecting Rs. 1500/- in mid of Nov-15 from snake gourd. Other farmer namely Ramiel Raito of Tohojung also got Rs. 5000/- from sanke gourd. The trailles with drip is the hope for sustainable income for the farmers. Jikoniya Gomango is telling that he has now not taking any debt from other moneylenders and maintaining the overall house expenditure from vegetable cultivation. They are proud to OTELP / ITDA support and faciliation of CCD for the support for sustainable livelihood promotion options for tribal farmers.



**WADI (Mango Plantation - Variety - Amarapalli)**

SL.No	Name of GP	Village	Ha.	No of plant	No. of Farmers	HDays Created	Survival (Nos)
1.	Tumulo	Sindiba	8.4	840	29	2052	823
2.	Tumulo	Bureising	11.6	1160	09	1503	1152
3.	Bhubani	Bhubani	4.2	420	11		408
4.	Bhubani	Ameising	6.0	600	15		564
5.	Brusava	Brusava	8.2	820	14		763
6.	Baijhal	Badudi	1.6	160	05		152



Mango Plantation (WADI) at Sindiba, Maneba and Bueising of Tumulo GP

**Important visitors**

Collector cum Dist Magistrate, Gajapati, Sub-Collector along with OTELP officials visited three economic units, mother chick unit and flour mill of Tohojung village 05-12-2014 and interacted with each beneficiary with facilitation of A. Jagannadha Raju, Secretary CCD.



Hon'ble M.L.A., Paralakhemundi, constituency inaugurated turmeric flour unit at Tohjang village operated by Priya Mahila Sangha. He has discussed with the group members and VDC members of Tohojung and Lung regarding the management of turmeirc processing unit and other development programmes.



Dr. Hrusikesh Panda, Commissioner cum Secretary, SC/ST Deptt., Govt of India visited Tohojung, U.Abasing village along with Collector cum Dist magistrate, PD, OTELP, PA, ITDA, district level officials of Gajapati and OTELP Officials to see the different economic units implemented by ultra poor vulnerable persons supported under IFAD top up assistance, OTELP / ITDA, Gajapati and inaugurated Flour mill at U.Abasing for Agadu Luara – Physically challenged person and also visited mother chick unit at U.Abasing. He has also visited Carpentry unit of James Luara and interacted with him at U.Abasing.

Standing Committee members from Govt. of Odisha ( 7 M.L.As) along with district level officials and OTELP officials visited U.Abasing village and Sindiba village of Gumma Block, interacted with the community and saw the mother chick unit, IHHL and other development works support by IFAD/ ITDA / OTELP in OTELP Phase I areas of Gumma Block.



### **Sustainable Livelihood and Empowerment process for Soura Tribal with support of MISEREOR**

Project "Sustainable Livelihood and Empowerment process for Soura Tribal" is being implemented in Rayagada Block with the support of **MISEREOR** to capacitate the community on their rights, social security schemes of government, to strengthen community based organizations and enable them to enhance the household income through different types of income generation activities and to promote and Strengthen the women cooperative and mainstream them with dignity and empowerment.

### **Outputs made during the year:**

- ☞ Project team facilitated 207 village level meetings. Discussions were held on village level problems like education, Agriculture, forest rights act, fruit orchard plantation, business, information dissemination for govt schemes ,VDC formation, PRI roles are discussed.
- ☞ 10 nos of farmer clubs are running in the project area. Total 63 nos of meetings are held at farmers club level.
- ☞ Project team facilitated linkages with OLM for Broom stick binding, khali stitching and supply of pineapple juice to OMPAc. 5 SHGs have provided 11,010 kg of pineapple juice to ompac and got an amount of Rs- 3, 19,290

### **Pineapple juice supplied to OMPAC**

<b><u>SHG Name</u></b>	<b><u>Juice in Kgs</u></b>	<b><u>Amount in Rs</u></b>
Surabhi SHG	2351 kgs	68179
Maria SHG	3021 kgs	87604
Sarojini SHG	2284 kgs	66236
Radheswari SHG	1731 kgs	50199
Indira SHG	1623 kgs	47067
<b><u>Total</u></b>	<b><u>11,010 Kgs</u></b>	<b><u>3,19,290</u></b>



- ☞ Rs 15000/- provided 15 vulnerable families (1000 each) of 8 villages for chick rearing
- ☞ Trainings programmes were conducted on land Right and forest rights act, Gender sensitization training, PWD act 1995, Nursery Raising training, SRI /Line Transplantation and one goatery training.
- ☞ This year co-operative election was held under the supervision of state election commission. The governing body meeting is regularly conducted to look after the management of the co-operative.

### **Status of Mahendragiri Cooperative:**

<b><u>Parameters</u></b>	<b><u>Current status March-15</u></b>
Individual a/cs	540 Nos
Group a/cs	96 Nos
PWDgroup A/c	38 Nos
Membership	313 Nos
<b><u>Loan to members</u></b>	<b><u>Rs. 13,62,891</u></b>

- ☞ 170 tribal families filled applications under forest right Act. 56 families have got record of rights over their occupied forest land.18 members got Indira Awas Yojana houses.
- ☞ 7 Tuition centres were opened with the co-operation of SMC&, Parents
- ☞ For a long time MGNREGA amount was pending, due to demand of the VDC group in the district level they are not able to get the pending amounts.
- ☞ 6 PWDs members got micro-credit support of Rs. 5000/-for undertaking IGA.
- ☞ 12 SHG members got micro credit support rs-6000/ each for undertaking IGA.



Tution centres have been opened for children after their

- ☞ MGNREGS scheme covered by plantation of horticultural plants 14 villages 138 farmers in 246 ac of land.
- ☞ Liasoning with agriculture dept. paddy cultivation made for 212 farmers in 206 acres in 45 villages.
- ☞ Maize cultivation done in 22 villages of 170 farmers in 144 acres. Raagi cultivation in 23 villages for 147 farmers in 107 acres. Vegetable cultivation done in 11 villages for 43 farmers in 26 acres.
- ☞ 6 Mushroom units were promoted in 6 villages, Khali stitching in 2 villages, Bee keeping in 2 villages, Tamrind in one village. One tailoring training unit was opened by Premika Bhuyan, of R. Nuasahi at Parlakhemundi Sundi street supported by DIC loan.
- ☞ Team of 20 women made an Exposure visit from REALS Andhra Pradesh to our Cooperative.

**Plantation activities carried out in MGNREGA programme in 146 acres in MISEREOR oprational areas of Rayagada Block.**

Orange Plant	6 villages	66 farmers	66 acres
Lemon Plant	4 villages	32 farmers	36 acres
Cashew Plant	4 villages	40 farmers	44 acres

**Total                      14 villages 138 farmers 146 acres**

**Mainstreaming the SC Community in 3 villages of Kasinagar Block**

Centre for Community Development (CCD) is implementing the project with the support of OSFDC Ltd, Govt of Odisha in 3 Villages of K. Sitapur GP of Kasinagr Block of Gajapati District for the economic enhancement of SC community.

**Objectives of the Program**

- ☞ To enhance the vocational skill and knowledge on resource mobilization, utilization of existing Resources and promotion of micro enterprises.
- ☞ To promote and strengthen women SHGs, JLGs, DPOs and youth clubs to act a pressure group.
- ☞ To establish a friendly environment in the village to avoid discrimination and untouchability.
- ☞ To enhance their income opportunities through social and financial inclusion.
- ☞ To ensure their active participation especially persons with disabilities, women and adolescent girls in planning, execution and monitoring.

**The progress made during the Year:**

<b><u>Sl. No</u></b>	<b><u>Name of Programme</u></b>	<b><u>No. of Programme</u></b>	<b><u>No. of village</u></b>	<b><u>Participants</u></b>
1.	Village meet to share the objectives	34	03	
2.	Sensitization camps	15	03	
3.	Concept of SHG and Promotion	06	03	
4.	Gender cocept to bring Gender equity	05	03	
5.	Skill Trn. for care & Management of Chick and small ruminents	02	01	18
6.	Animal Husbandry practices	01 (5 days)	01	20
7.	Employment training on Mushroom cultivation	01 (6 days)	03	28

**Major Achivements during the Year:**

- ☞ 15 Nos SHG Formed And Strengthened - 162 beneficiaries were mobilized into 15 SHGs.
- ☞ Preparation of micro-plan Completed in 3 villages
- ☞ Selection of trade and beneficiaries - 193 SC women has been identified for micro-credit support to undertake various income generation activities.
- ☞ Cluster Level Committee has been formed on 28/1/2015 involving line departments and community members.
- ☞ 3 SHGs from Singipur and Devdala have received working capital support of Rs 50000/- for undertaking seasonal business.
- ☞ CRPs are providing the service of filing of application for ration card, SHG promotion and Strengthening, bank linkages, sanitation, drinking water, health services etc.
- ☞ WEO (Agriculture) Visited Singipur and encouraged the farmers for vegetable cultivation which is in process.

**India Farm Forestry Programme**

Centre for Community Development (CCD) has been implementing the India Farm Forestry Program in collaboration with DEG, International Finance Corporation (IFC), JKPM.DEG/IFC supported the project till Dec 2014.

The project was started in 2012 in 4 blocks and it was well implemented by the interested farmers. The survival rate was also about 94%. But due to Phylene and Hudhud in 2012-13 and 2013-14, maximum plants were affected the farmers helpless to ensue the survival of the plants.

**Status of Plantation till Mar 2015**

Block	No of Farmers	Area in Acre	Total Plant	Survival Rate(%)
Gumma	265	209.62	189155	53
Rayagada	133	158.71	143322	35
Gosani	148	120	110250	46
Kasinagar	73	49.23	44513	53
<b>Total</b>	<b>619</b>	<b>537.6</b>	<b>487240</b>	<b>46%</b>

JKPM has agreed to continue the project with minimum support till December 2016.

### COMMUNITY HEALTH

#### NAME OF PROJECT

**MALARIA PREVENTION AND CONTRIL PROGRAMME  
SUPPORTED BY : SDTT, MUMBAI**

#### PROGRAMME OUTREACH

Block	:	Rayagada
Gram Panchayat	:	Loba,Dombal,Puttar Talamunda, Marlaba & Jollango
Total Villages	:	50 villages
Total HHs	:	3085
Total Population	:	14,719
Target group	:	Children and Women (Pregnant Women)

**Background & Introduction**

Gajapati District is a hilly region and scattered inhabitation. It was not possible to address issues with a single organisation. CCD and other five NOGs (PRAVA, JKP, SURAKSHA, CARD & SACAL) collectively through a consortium intervened in the endemic zones (300 Villages) in 6 blocks of Gajapati district. CCD is leading and coordinating the programme in the district. The programme is being implemented since **April 2012** with the financial support of SDTT, Mumbai. MITRA, Christian Hospital BissamKatak has been providing technical support.

**Following strategies were adopted for malaria prevention and control**

- Ø Promoting education for empowerment on prevention and early treatment of malaria and facilities available for malaria
- Ø Saving lives, decreasing sufferings and reducing parasite load in the project area through early diagnosis, prompt treatment and referral service
- Ø Reducing breeding sits by mud filing/removing water logging and preventing man-made breeding sites



- Ø Practicing personal protection measures and behavioral change, to reduce the risk of mosquito bites at night, through the use of repellants, mosquito nets etc
- Ø Capacity building of the organization to manage a community -based malaria control programme and enhance its sustainability.

### 1. **Capacity Building Initiatives**

- ✎ 3 Trainings were conducted for 42 field team members of six partner organization on malaria and malnutrition. Resources person from NVBDCP, NRHM, DSWO, NRC and DHH facilitated the trainings.
- ✎ 4 trainings were conducted on Management of Information System (MIS) in health. Discussions were held on different formats, data entry, data cleaning, data validation, analysis of data, findings sharing with team for intervention etc. Field Coordinator, MIS Officers, Project Directors participated in the trainings. The participants also learnt calculations of different health indicators like IMR, MMR, Under Five Mortality, Still Birth, API, Malnutrition etc.
- ✎ One district level workshop with govt. health department was conducted on 27<sup>th</sup> Feb 2015 to share the learning and findings of malaria prevention. CDMO, DMO, Representatives from NVBDCP and Malaria technical Supervisors and project team members of six partner NGOs participated in the workshop. Both health department and NGOs made presentation on their initiatives.
- ✎ 4 Trainings were conducted for 157 pregnant and lactating women on malaria, health care and nutrition management.
- ✎ 4 Trainings were conducted for 166 mothers on exclusive breastfeeding.
- ✎ 4 Education programmes were conducted for 172 parents of children.
- ✎ 20 nos of school level sensitization camps were conducted to educate the children of children and motivate them for reducing breeding site in their locality.
- ✎ 2 area level food fairs were organised at limolsing and Mondalsahi to educate the community on the nutritious values of locally available of nutritious food. Tribal women brought 120 different variety of raw and cooked food to the fair.



- ☞ The nutritional values of cereals (Ragi, suan, kangu, kundadhau etc), pulses, green leafy, tuber crops, vegetable, fruits, animal foods etc. were discussed in these food fairs. Medical officer, Rayagada PHC, local PRI members like Sarapanch, Samiti Sabhya, ward members, ICDS supervisor, AWWs, ASHA, local leaders and community mainly tribal women participated in the food fair. At the end, everybody tasted the food.



### 1. **Progress So Far –**

- ☞ Awareness among the community especially among women and children has increased on malaria.
- ☞ Malaria issues have been placed in SHG and Village meeting. Weekly dry has been observed with the involvement of SHGs and SHGs is also involved in monitoring of the programme.
- ☞ Performance and involvement of Grass root level functionaries has been activated.
- ☞ Use of Personal protection measures like mosquito nets, neem oil, neem leaf smoke and other traditional practices has been increased.
- ☞ Preference for blood testing has been increased. 90 % fever cases have done blood testing in 2014.
- ☞ 43 VHVs are enabled to provide EDPT services. 409 malaria positive cases are treated with the facilitation of project team in 2014.
- ☞ Importance of quack has been reduced to a great extent. 373 malaria positive cases were treated by Quack in 2012 and it is now 29 cases only treated by Quack.
- ☞ 1750 mosquito nets were treated with deltametharin with the support of NVBDCP, Gajapati
- ☞ Institutional delivery has increased from 56 % to 63%.
- ☞ Central monitoring has helped the partners in sharing of best practices and also enhanced the work efficiency of member organization.
- ☞ Coordination with Govt./Health Department has increased.
- ☞ MIS has helped in monitoring the progress analytically. Scope for introducing MIS in other projects.
- ☞ 50 malaria and malnutrition camps were organized where 1171 children were screened for malaria and malnutrition. 100 pregnant mothers and 274 fever cases were screened in the camps. 6 % of the total screened children, 9 % of pregnant mothers and 19 % of fever cases were found malaria positive.



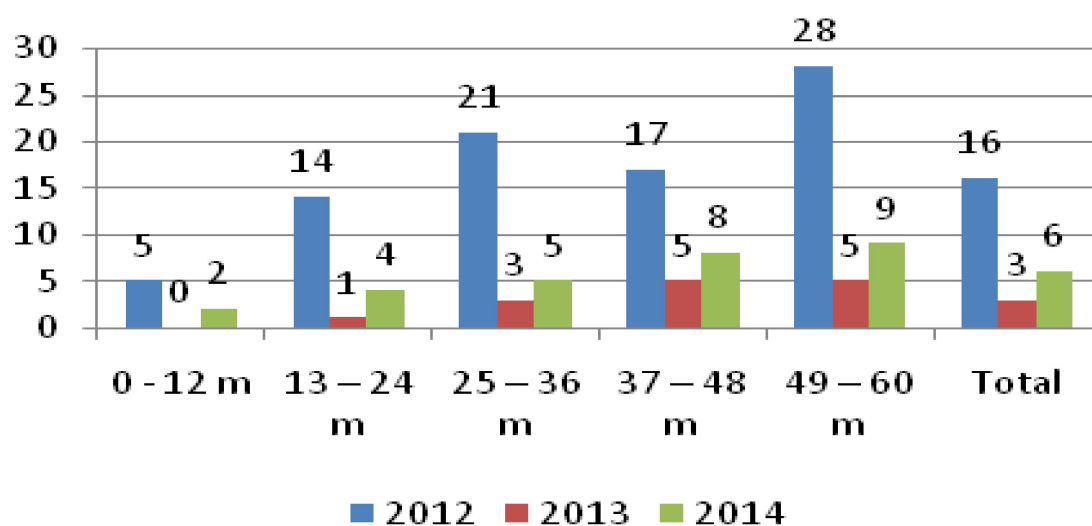


Point prevalence of malaria has reduced by 63 % from 16 % (2012) to 6 % in 2014.

Year	2012	2013	2014
Fever Deaths	14	8	1
Total Death	122	137	92
%	11	5.8	1

Fever related death has been reduced from 14 in 2012 to 1 in 2014.

**Age Wise Point Prevalence of Malaria among Children (0-5 Years)**



#### **WOMEN EMPOWERMENT & MICRO ENTERPRISES PROMOTION**

CCD since its inception has been focusing on gender equity. Gender perspective has been integrated in all programmes and projects. CCD has mobilized tribal, SC and back ward community's women into Self Help Groups and promoted two cooperative society. Two cooperative societies (Gajapati Women Cooperative Societies Ltd, Paralakhemunid and Mahendragiri Cooperative Societies Ltd, Gajapati) are now running independently. During this year with the Support of State Bank of India, CCD has provided micro-credit support to Groups for promoting micro-enterprise at individual and group level for improvement of the business led by the women SHG members.

**During this year, the loan status and outstanding with members :**

No. of members taken loan	:
Total loan provided	: 2,50,000.00
Total repayment made by the members	: 21,65,104.00
Total loan repaid to SBI, Paralakhemundi :-	
Total principal paid	: 1,19,879.00
Total interest paid	: 8,04,365.00
Total loan outstanding with members	: 1,21,77,747.00

**MAINSTREAMING THE PERSONS WITH DISABILITIES****MAJOR SUPPORTED PROJECTS**

<b><u>Project</u></b>	<b><u>Supportedby</u></b>	<b><u>OperationalArea</u></b>
Orissa Social Inclusion Project	Sight Savers	Rayagada Block
Economic Rehabilitation Support	ADD INDIA	4 blocks
Capacity Building & Economic Rehabilitation of PWDs.	REHASWISS	4 Blocks
OTELP / ITDA	IFAD	Gumma Block

Persons With Disability (PWDs) are the most vulnerable community of the society. Since 2005, CCD has been working for the overall development of PWDs. Presently CCD is working with 1439 PWDs of Gosani, Gumma, Rayagada and Kasinagar block.

**Capacity Building initiatives**

- ☞ 42 teachers and 95 parents were participated in the 6 training programs on inclusive education.
- ☞ 78 PWDs leaders were provided training on SHG promotion and strengthening.
- ☞ Seven block level clinical assessments camps were organised where 220 Visually Impaired and Low Vision persons participated in the camp. Two opthalmist tested the visual status and suggested necessary actions.
- ☞ Orientation mobility, Daily Living skills and communications trainings were provided to 25 children with visually impaired children. Braille education was also provided to children.

- ☞ The three days training programme was conducted for women with disabilities with the support of Ms.SusmitaSamataray from UN-WOMEN. Discussion was held on RCH related problems and its solution.
- ☞ 4 numbers of block level sensitization camp organized in 4 blocks to sensitize different stakeholders on disability and development.
- ☞ 30 members have attended the two days training on lobby and advocacy. The leaders of SAMARTH learnt about different policies for PWDs and management of district level DPO.
- ☞ 12 monthly network meetings of PWDs were conducted during the year and discussions were held on different programme and schemes for PWDs and issues of PWDs in the district.
- ☞ World Disability Day was observed in collaboration with district administration. 84 PWDs participated in the meeting. A peaceful rally was also organised by PWDs on the eve of world disability day.
- ☞ Three months residential computer training programme conducted where 10 PWDs participated and learnt computer data entry.

### **Major Achievements**

- ☞ District level disabled people organization " SAMARTH" has been strengthen and the leaders are regularly coordinating with different government departments for effective implementation of programme and schemes meant for PWDs.
- ☞ Supports have been provided to PWDs by DPO leaders and staff members to avail different benefits and entitlements.
- ☞ PWDs on their own also accessed different entitlements.
- ☞ 45 children with disability were enrolled in the general school after providing necessary education.
- ☞ 45 PWDs have got different aids and appliances from government and other resource agencies.
- ☞ 2 Locomotor persons have got Marriage allowance of Rs 50000.00 each.
- ☞ 10 PWD's got 20,000 each for the undertaking different income generation program from district collector and started their business.

<b><u>Entitlements</u></b>	<b><u>NO</u></b>
Rice card	60
Disability Certification	212
Disability Pension	145
Aids and appliances	45
Health card	46
Ration Card	34
Banishree/Escort Allowance	37
School Enrolment	45
Bus Pass/Train pass	123
MGNREGA Job Card	68
IAY	42

<b><u>No of PWDs</u></b>	<b><u>Type of Activity</u></b>
1	Tailoring
2	Khalli business
4	Petty shop
3	Agriculture
5	Seasonal Business
1	Fish Business
4	Vegetable vending
3	Cow rearing
12	Mobile repairing shop
1	Photo shop
4	Goatry
5	Goatery shop
4	Chicken center
2	Carpentry

☞ 5 visually impaired students of higher education have got LAPTOP from the state govt.

☞ Mr.Santos Kumar Moharana (Visually Impaired person) was awarded with District level award for his outstanding contribution for the empowerment of PWDs in the district.

☞ 34 SHGs of PWDs have been formed during the year. 10 SHGs have got revolving fund support under Mission Khyamata scheme.

☞ Micro-credit support of Rs 4,20,000 provided to 50 Nos of Perons With Disailities to promote different income generation activity supported by REHASWISS, Switzerland.



☞ **Special Support to Physically Challenged (Rs. 55000/- each - supported by OTELP / ITDA / IFAD)**

Sl. No	Name of project	No. of Village	No of Ben.	Programme
1.	Grocery shop	04	05	OTELP P-1 Ext.
2.	Carpentry shop	04	04	OTELP P-1 Ext.
3.	Flour mill	01	01	OTELP P-1 Ext.
4.	Tailoring shop	04	04	OTELP P-1 Ext.
5.	Mobile repair shop	01	01	OTELP P-1 Ext.
6.	Grocery Shop	01	01	OTELP Plus
7.	Carpentry Shop	01	01	OTELP Plus
8.	Tailoring Shop	01	01	OTELP Plus



Mojaniya Raita is running his mobile repair shop at Gumma



Jabari Bhuyan is running her tailoring unit at Sindiba



James Luara of U.Abasing is maintaining Carpentry shop

### **Case Study**

#### **Ray of hope for Basaيدا Disable Rights Group for sustainable income generation and mainstreaming in Society**

Basaيدا Disable Rights Group is formed in 2013 at Luara village of Ajayagada GP in Gumma Block consisting of 10 members from different categories and also including both male and female members with savings of Rs. 50/- per month by each member per month. With their continuous monthly savings, they have planned to start business activities of their own. But it was not possible to start a business with low investment and they have approached CCD for financial support.

In the meanwhile, the support of IFAD Top up assistance was brought the ray of hope to start their individual business activity (Grocery Shop). During poorest of poor selection by well being ranking analysis through participatory approach, the villagers recommended to support Basaida SHG to take up grocery unit for their self sustainability income generation.

IFAD / OTELP / ITDA has sanctioned Rs. 55000/- the Latiban VDC (Luara) and as per the VDC and CPC recommendation the members of the group purchased the required grocery item and also constructed the shop at Luara Village. 4 members of the group namely 1. Gade Mandal, 2. Projoni Karjee, 3. Ajaya Sabar and Ribiyu Mandal are maintaining day to day transaction activities. Mr. Ajaya Sabar, aged about 14 years and reading in class 6<sup>th</sup> STD is maintaining day to day account for transparency and accountability. The VDC secretary is taking the responsibility for monitoring and supervision of the shop and providing hand holding support for the members to improve their business and also get more profit.



Now the group members are happy to share that they are now getting Rs. 800/- to Rs. 1000/- per day and the net profit is around 150/- per day. They have revolved two times in purchasing grocery items from wholesale dealer from Paralakhemundi with the help of VDC members. The group members and VDC members have expressed their deep gratitude to ITAD / OTELP / ITDA and also for the facilitation of CCD towards availing sustainable income opportunity for them. The group members are now trying to improve their shop with more inputs / items as per the need of the locality.

## CASE STUDY

<b>Name</b>	<b>:-</b>	<b>Mamata Raito</b>
<b>Age</b>	<b>:-</b>	<b>26</b>
<b>Type of disability</b>	<b>:-</b>	<b>Visually Impaired</b>
<b>Marital status</b>	<b>:-</b>	<b>Married</b>
<b>Village</b>	<b>:-</b>	<b>Jeerango, Rayagada Block</b>

Ms. Mamata Raito is one visually impaired lady having 100% blindness belong from ST category. She has one sister and mother staying in her family. She is a married girl but due to her vision disability her husband is not cooperating her. She has ratina problem in one eye at the age of 12 years. But day by day that has spread to another eye and she felt severe pain in both of eyes. After lot of treatment she couldn't able to cure and loosed her vision forever. After became blindness she felt loneliness and her husband also left her. So she came back to her mother's house.



She joined the PWD group and was inspired and motivated by team members of CCD. She became the president of Rajiv Disability Right Group. She

came to know about the rights and entitlements of PWDs. She participated in the vocational training on leaf plate preparation. She has attended skill development training and learnt mobility and daily living skills. After the training program she regularly attending village and SHG meeting in her village. She has applied financial support Rs.5000 for her seasonal business and CCD provided her financial assistance of Rs 5000/-. In the mean time she got rice card , pension and IAY. She collected leaf and statred making leaf plate. She is making 70-80 leaf plates per day and able to earn 70-80 ruppess per day. She is selling the leaf plates in the weekly markets. She also supplys leaf plates to hotels, marriage and other fuctions on demand. She is now become expert and imparting training to other PWDs on leaf plate making. Now she is no more a dependant on her family and she is an active contributor to the household income. She became economically self reliant now.



### **Action Plan for 2015- 2016:**

- Organization development initiatives would be taken on priority basis. Some initiatives have already been initiated in the month of February and March 2015, that will carry forward.
- Preparation of PERSPECTIVE PLAN-VISION 20-20 for next five years (2016-2020)
- Revisit and Review of existing policies and formulation of new policies like environment
- Staff capacity building will be given due importance. Staff will participate in internal and external training programmes to enhance their knowledge and skills.
- Promotion & strengthening of organization of primary producers and facilitate product specific market intervention so that the primary producer will get fair price.
- Capacity building of farmers on sustainable agriculture practices and organic way of cultivation to improve the soil health as well as to enhance the production.
- Video Shows will be organized at the village level on Malaria, Malnutrition, Organic farming, millets and pulses cultivation, disability and development, primary processing and value addition, care and management of livestock.
- Facilitate proper implementations of VDCPs in the operational areas with the active involvement of the community.

- Sustaining Malaria prevention & Control Activities. The project will end in Sept 2015. So the emphasis will be given to activate the govt. systems and adoption of personal protection measures like use of mosquito nets, Neem oil, repellants etc.
- Strengthening of DDRC, SAMARTH& Braille Resource Center so that more PWDs can avail benefits. Skill development of PWDs and Micro-credit support for under taking micro-enterprise will be continuing next in the next year also.
- Convergence with line department will be continuing and will be given top most priority at the district as well as at the grass root level in all the operational areas of CCD.

### **Governance in CCD**

CCD is adopting good governance practices within the organization as well as at the operational area. CCD has adopted various policies like HR, Financial management, Child Policy, Gender Policy, Disability Policy etc. Board members are inspiring the team. Governing body sits thrice in a year to review the progress of each programme. Effective guidance of the board members is helping CCD for smooth implementation of the programme. Board members have also visited project areas to see the result of development programmes at the community level.

### **Human Resource**

- ☞ CCD has a committed, qualified and experienced team. Staff capacity building at regular interval is going on to enhance the knowledge and skills of team members.
- ☞ Team members are well aware about their role and responsibilities. Mr. A Jagannadha Raju is the secretary cum executive director leading CCD.
- ☞ CCD has 37 full time staff out of which 11 are female staff. CCD has adopted staff welfare policies. Staffs are being covered under EPF and health insurance. 91 volunteers are also associated with CCD for different purpose. Distribution of staff according salary level is given below:

<b><u>Gross Salary in Rs</u></b>	<b><u>Male</u></b>	<b><u>Female</u></b>	<b><u>Total</u></b>
< 7001	4	2	6
< 10001	11	5	16
< 15001	5	1	6
< 20001	1	1	2
< 25001	4	2	6
< 30000	1	0	1

### **Details of Human Resources**

<b><u>Designation</u></b>	<b><u>Qualification</u></b>	<b><u>Experience</u></b>	<b><u>Male</u></b>	<b><u>Female</u></b>	<b><u>Tribal</u></b>	<b><u>Total</u></b>
<b><u>Full Time</u></b>						
Executive Director	M.A. in Public Administration	35 years	1	0	0	1
Project Coordinators	Graduate and Post Graduate	5- 15 years	8	2	1	10
Accounts	MBA Finance, B.com	15 years	3	0	0	3
Livelihood Expert	MSW	5 years	1	0	0	1
Engineer	B.tech	2 years	2	1	1	3
Block/Cluster level Coordinator	Intermediate- Graduate	2-15 years	9	6	0	15
MIS/Admn Personnel / Office associates	Graduate	2-5 years	3	2	0	5
<b><u>Part Time</u></b>						
Community Mobilizers /CRPs	5 <sup>th</sup> & More	2-3 years	35	11	41	46
Volunteers	5 <sup>th</sup> & More	2. - 3 years	22	28	50	50
		<b>Total</b>	<b>84</b>	<b>50</b>	<b>93</b>	<b>134</b>



### Details of Board Members

<u>SL. No</u>	<u>Name of the Member</u>	<u>Qualification</u>	<u>Designation</u>	<u>Occupation</u>
1	Mrs. Irene D'Silva	Diploma in General Nursing & Midwifery	Chairperson	Social Worker
2	Mr. A. Jagannadha Raju	M.A. in Public Administration	Secretary	Social Worker
3	Mr. P. Balram Naidu	M.A., B.Ed	Treasurer	Social Worker
4	Mr. Ramnath Mishra	M.A. LLB	E.C. Member	Advocate
5	Dr. Pradip Swain	M.B.B.S	E.C. Member	Director, Serongo Eye Hospital and Eye Specialist
6	Mr. Syam Sundar Barik	M.S.W	E.C. Member	Training & Reserach in XIMB
7	Mrs. Ashalata Amana	M.A. B.Ed	E.C. Member	Retd. Teacher
8	Ms. Baijyanti		G.B. Member	Disable Activist
9	Dr. U. Girijapati	MBBS	G.B. Member	Child Specialist in DHH
10	Prof. Bijoy Kumar Jena	MSC AG	G.B. Member	Dean, Agrl. College
11	Promodini Bhuyian	10th	G.B. Member	Tribal Women Leader

### Conclusion:

*A lot of important initiatives have been under taken during the year like publication of monthly e-news, organizational development initiatives and use of low cost technology. CCD has done its level best to improve its implementation mechanism. Community has always been in the centre of all the interventions. CCD thanks all the stake holders, well-wishers, funders and others who have provided their helping hand to CCD.*

\* \* \*

**CA P. Shaila Kumar**  
B.Sc. (Hons.) F.C.A.  
M.No. 300-53813  
**CHARTERED ACCOUNTANT**

Market Square  
Paralakhemundi - 761 200  
Dist. Gajapati, Odisha  
06815-222510(O)  
06815-224222(R)  
Mob : 9437370841  
e-mail: pshailakumar.ca@yahoo.co.in  
pshailakumar.ca@gmail.com

### **AUDIT REPORT**

I have audited the annexed " **CONSOLIDATED RECEIPTS AND PAYMENTS ACCOUNT, INCOME AND EXPENDITURE ACCOUNT AND BALANCE SHEET OF CENTRE FOR COMMUNITY DEVELOPMENT (CCD),** Sridhar Nagar-1, Near Check Post, Patapatnam Road, Paralakhemundi, District - Gajapati, Odisha for the period from **01.04.2014 to 31.03.2015** to express an opinion on these financial statements based on my audit.

I have conducted my audit in accordance with Auditing Standards generally accepted in India. I performed the audit to obtain reasonable assurance about whether the financial statements are free from material misstatement. I believe that my audit provides a reasonable basis for my opinion and report that:

I have obtained all the Information and explanations, which to the best of my knowledge and belief were necessary for the purpose of my Audit.

In my opinion proper books of account as required by law have been kept by the company, so far as appears from my examination in book.

The receipts and Payments account, is referred in this report are in agreement with the books of account.

In my opinion the financial statements comply with the Accounting standards specified by the ICAI.

In my opinion and to the best of my information and according to explanations given to me the accounts give a true and fair view.

- i) In the case of Receipts and Payments of the state of affairs for the period ending 31.03.2015;
- ii) In the case of Income and Expenditure of the state of affairs for the period ending 31.03.2015;
- iii) In the case of Balance Sheet of the state of affairs of the organization as at 31.03.2015.
- iv)

PARALAKHEMUNDI

DATE: 15/4/2015



*P. Shaila Kumar*  
CA P. SHAILA KUMAR

CHARTERED ACCOUNTANT

M No: 53813

*P. Shaila Kumar*  
B.Sc. (Hons.) F.C.A.  
CHARTERED ACCOUNTANT  
M.No. 300-53813

CA P. SHAILA KUMAR  
B. Sc. (Hons) F.C.A.  
CHARTERED ACCOUNTANT  
M. No. 53813

Kornali Street, Market Square  
Parlakhemundi, Dist. Gajapati, Orissa-761200  
Phone: 06815-222510 (C), 06815-224244 (R)  
Mobile: 9437370641  
Email: pshailakumar\_5a@yahoo.co.in

**CENTRE FOR COMMUNITY DEVELOPMENT (CCD)**  
Sothar Nagar Lane-1, Near Check Post, Pattapattam Road, Paralakhemundi-Orissa-761200  
**CONSOLIDATED INCOME AND EXPENDITURE ACCOUNT FOR THE PERIOD FROM APRIL - 14 to MARCH-15**

EXPENDITURE	AMOUNT	INCOME	AMOUNT
<b>By Revenue Expenditure</b>		<b>Grant in Aid Received From:</b>	
* MISEREOR (Sustainable Livelihood & Empowerment projects for SC/STs)	575,060.00	* MISEREOR	372,927.50
* REHABWISS (Capacity Building & Mainstreaming of PWDs and Vocational Training to PWDs)	1,346,333.00	* REHABWISS	1,830,000.00
* Royal Common Wealth Society for the Blind (Orissa Social Inclusion Programme)	1,200,000.00	* Royal Common Wealth Society for the Blind	865,190.00
* Add India (Income Generation Support to PWDs)	35,040.00	* Add India	35,040.00
* DEG-IFC (India Farm Forestry Programme)	441,204.00	* DEG-IFC	432,520.00
* TATA EDUCATION TRUST-SOTT (Musam Panchayat & Central Programme in Gajapati)	2,524,987.00	* Tata Education Trust	1,375,775.00
* OTTEP PLUS-WOTR (Orissa Tribal Empowerment & Livelihood Programme)	1,535,130.00	* OTTEP PLUS-WOTR	1,051,625.00
* OTTEP Extension (Orissa Tribal Empowerment & Livelihood Programme)	5,798,007.00	* OTTEP PLUS-Extension	5,791,000.00
* OTTEP-Comprehensive Adult Education Programme (NABARD Village Development Plan & Promotion of Farmer Group)	171,950.00	* OTTEP-CLAP	187,000.00
* OSFDC Ltd	53,109.00	* NABARD	124,254.00
* GENERAL Account-CCD	96,745.00	* XIMS-Bhubaneswar	30,000.00
* Bank Charges	1,006,263.00		
* Depreciation Charges	130.00	<b>OTHER RECEIPTS</b>	
	246,286.70	* Membership Fees	2,400.00
		* Sale of News Papers	2,550.00
		* Bank Interest	142,238.00
		* Contribution & Donations	880,629.00
		* Sale of Nursery Plants	115,000.00
		* Sale of & wheat	114,454.45
		<b>Local Contribution</b>	
		* MISEREOR	30,600.00
		* REHABWISS	72,000.00
		* Excess of Expenditure over income	2,219,670.74
<b>TOTAL</b>	<b>11,685,133.70</b>	<b>TOTAL</b>	<b>11,685,133.70</b>



PARLAKHEMUNDI  
DATE

CA P. SHAILA KUMAR  
CHARTERED ACCOUNTANT  
M. No. 53813

CA P. Shaila Kumar  
B. Sc. (Hons) F.C.A.  
CHARTERED ACCOUNTANT  
M. No. 53813

CA P. SHAILA KUMAR  
B. Sc. (Hons) F.C.A.  
CHARTERED ACCOUNTANT  
M. No. 53813

Kornali Street, Market Square  
Parlakhemundi, Dist. Gajapati, Orissa-7611  
Phone: 06815-222510 (C), 06815-224244 (R)  
Mobile: 9437370641  
Email: pshailakumar\_5a@yahoo.co.in

**CENTRE FOR COMMUNITY DEVELOPMENT (CCD)**  
Sothar Nagar Lane-1, Near Check Post, Pattapattam Road, Paralakhemundi-Orissa-761200  
**CONSOLIDATED BALANCE SHEET AS ON 31.03.2015**

LIABILITIES	Rs.....P	Rs.....P	ASSETS	Rs.....P	Rs.....P
<b>GENERAL FUND</b>			<b>FIXED ASSETS</b>		
As per last A/c	3,489,116.44		As per last A/c	1,974,340.42	
Less:- Excess of Expenditure over income during the year	2,219,370.74	1,267,545.70	Add:- During the Year	609,948.46	
<b>CURRENT LIABILITIES</b>			Less:- Dep. Charges	246,006.70	2,338,282.18
<b>SBI-SHG ACCOUNT</b>			<b>CURRENT ASSETS</b>		
As per last A/c	13,252,762.00		<b>SBI-SHG ACCOUNT</b>		
Bank Linkages to SHGs by SBI	250,000.00		As per last A/c	12,852,000.00	
<b>TOTAL</b>	<b>13,532,762.00</b>		Bank Linkages to SHGs by SBI	250,000.00	
Less:- Repayment to SBI (119978+604365)	624,343.00	12,508,419.00	Less:- Repayment by SBI (119978+604365)	924,343.00	12,177,747.00
As per last A/c			<b>Fixed Deposit</b>		80,000.00
* Provision for Dep. & Doubtful (S.F.D.)		2,000,581.00	<b>TDS Receivable</b>		
2005-06-Rs.	30,345.00		As per last A/c	4,779.00	
2006-07-Rs.	5,84,972.00		Add:- O.S.F.D.G (R)	40,770.00	45,549.00
2007-08-Rs.	12,85,264.00		<b>Grant Receivable from</b>		
<b>Cur. Standings as per last A/c</b>			EGS-OPEPA		308,767.00
EGS-OPEPA		300,513.00	<b>CLOSING BALANCE</b>		
As per last A/c	30,000.00		* Cash in Hand	0.00	
Less:- Paid for Audit Fees-SOTT Project (2013-14)	30,000.00	-	* Cash at Bank	1,558,992.52	1,559,001.52
Interest from Maudia	385,700.00		<b>TOTAL</b>		<b>16,885,294.79</b>
Add:- Interest	36,036.00				
Total	421,736.00				
Less:- Interest	36,036.00				
Less:- Principle	57,454.00	315,236.00			
<b>TOTAL</b>		<b>16,885,294.79</b>			



PARLAKHEMUNDI  
DATE

CA P. SHAILA KUMAR  
CHARTERED ACCOUNTANT  
M. No. 53813

CA P. Shaila Kumar  
B. Sc. (Hons) F.C.A.  
CHARTERED ACCOUNTANT  
M. No. 53813



**CENTRE FOR COMMUNITY DEVELOPMENT (CCD)**  
**NEAR CHECK POST, PATHAPATNAM ROAD**  
**SRIDHAR NAGAR, LANE - 1**  
**PARALAKHEMUNDI, GAJAPATI DISTRICT - 761200**  
**ODISHA, INDIA**  
**PH : +91 6815 222516, E-MAIL : ccdevraju @ gmail.com**  
**Web site : [www.ccdodisha.org](http://www.ccdodisha.org)**